



Fueling People Power Around the Globe

WHY RHIZE?

We are in a critical moment in history. In an age of a technological revolution where more people than ever before have access to information that transcends borders, language, economics, gender and culture, democracy is on a global decline. Civil society spaces are closing, making the world population less free. Inequality is at an all-time high, forcing us to reexamine the last sixty years of international development. And more and more people continue to feel the negative impacts of increasingly rapid climate change.

At the same time, the world has seen more social movements in the past decade than ever before: People want to participate in change for the better but often lack the avenues to do so beyond periodic elections. And often, inadequate infrastructure to support social and political movements makes it difficult to scale and sustain them, and mass protests often disappear as quickly as they appeared.

**It's time to redefine and reinvent democracy to reflect the values in which it was invented:
To be truly people-powered.**

PEOPLE RHIZING



A little known fact is that social movements are the greatest weapon for the transformational change we need. In fact, they have repeatedly proven more effective than violent conflict. Even less known is that there are catalytic leaders in every community, every city, every country around the world who are using movement-building as a way to transform their communities and combat injustice. Movement-building utilizes the world's most plentiful (and growing) resource—people—to sustainably build powerful communities that can tackle the world's greatest challenges. These community-driven solutions take hold and replicate because scale and ownership are built into the process from the beginning.

RHIZE PRINCIPLES

There are proven strategies and approaches for nonviolent civil resistance that fall under three core principles: (1) a strategic movement-building lens that allows leaders to think beyond any one victory, (2) an ethic of community-building and (3) an ability to effectively and strategically activate constituents using both grassroots and digital platforms. Rhize works with movements to build on their strengths and integrate these elements with the goal of creating sustained, strategic and impactful action that changes the status quo.





rhize

WHO IS RHIZE

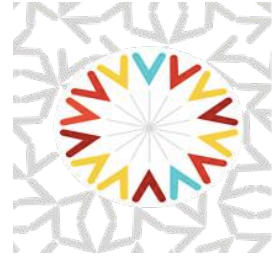
Rhize is redefining and reinventing democracy by supporting the catalytic leaders or “catalysts” who are using people power to challenge the status quo and replicating the models they build across the globe. Together with experienced Coaches, who support these catalysts with proven strategies, skills and tools, and concerned Allies who understand the power of people, we form a growing, global community harnessing people power to tackle the world’s most pressing challenges.



CATALYSTS



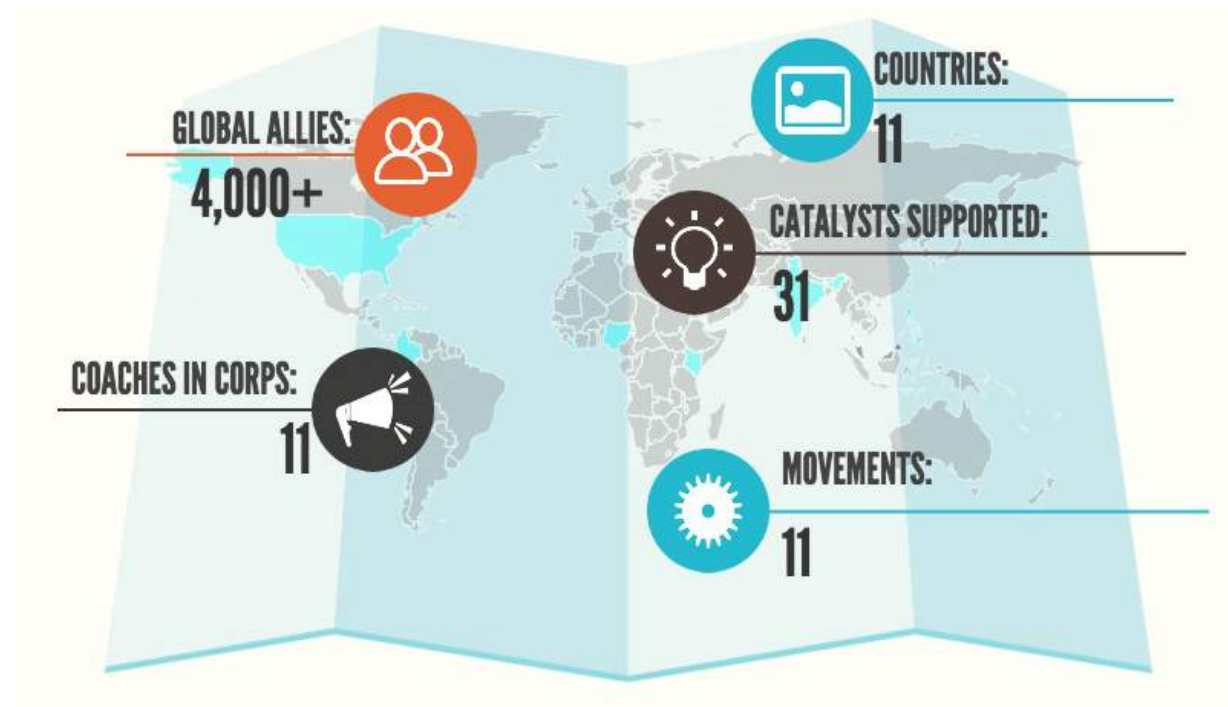
COACHES



ALLIES

As each community grows, so does Rhize’s decentralized network, building power in all corners of the world. Catalysts often become Coaches, passing on their experience and skills. And Allies inspire others to join the movement for participatory democracy, creating our Global Allies Network.

HOW WE’VE RHIZED





rhize

RHIZING STARS: Success Stories



Pradeep Raj—Disability Rights Activist, India – Received Rhize training & coaching. Won campaign for handicap access to all sports stadiums in India using digital campaigning & grassroots mobilization; Increased community membership.



Allie Rickard & Zoe Rodolfi-Starr—Carry That Weight against sexual assault on college campuses, USA – Received Rhize coaching & allies support for PR, logo design, website build, coalition-building, donations. Expanded from 1 to 150 campuses in 5 countries. 25 media hits. 1000+ digital supporters in 3 weeks. Led to major city legislation and leadership development within the movement.



Mohammad Lamin Saidykhan—Citizen Empowerment, The Gambia – One of Rhize’s first catalysts, Lamin worked to bring Rhize to The Gambia to train 30 youth activists in preparation for their national land equality campaign in December 2014. These activists have now gone on to train others and develop local, community campaigns. A veteran activist, Lamin is now serving as a Rhize Coach, passing his experience on to our Kenyan catalysts.

RHIZE TODAY

Rhize is quickly becoming a global leader in innovation for 21st century social movements. Going into our second year, Rhize has quickly expanded its Coaching Corps to 11. This team is innovating models of support to 23 catalysts and 8 movements working on 8 different issues on 5 continents and every major region around the world. Together, we’re building a global army of changemakers who are quickly inspiring others to join the fight for a more people-centered, inclusive and equitable world.

MEET SOME OF OUR CATALYSTS & COACHES



Baranquilla+20 – Environmental Justice, Colombia



Bring Back Our Girls – Anti-Terrorism + Accountability, Nigeria



Task Force ANTI APECO—Indigenous Peoples Rights, Philippines



Trinh Nguyen—Viet Tan, Vancouver, Canada



Elandria Williams—Highlander Center, Knoxville, USA



Søren Warburg—Beautiful Rising, Copenhagen, Denmark